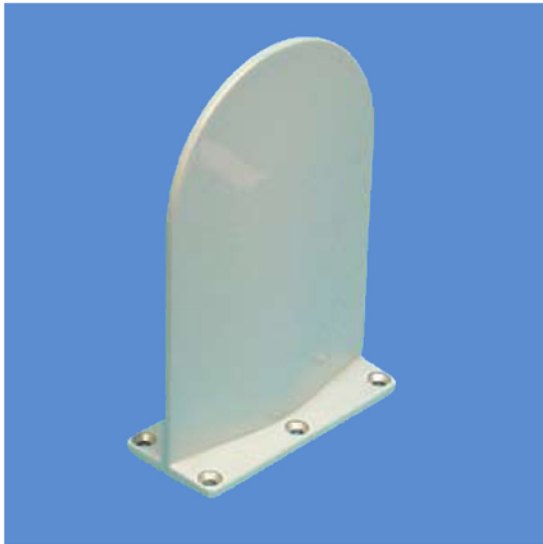


# Glide Slope S41422-6



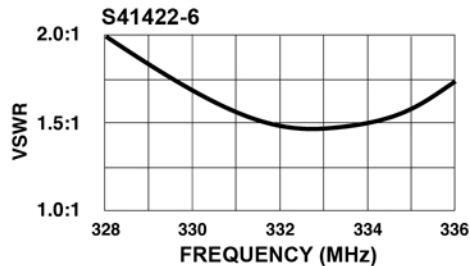
## DESCRIPTION

**S41422-6:** High-gain, single-port Glide Slope antenna with built-in fault isolation network. Fiberglass radome bonded over aluminum alloy casting provides high structural strength. Type 'N' connector. Hermetically-sealed for long service life. Interchangeable with other Glide Slopes, simplifying spares replacement. Interchangeable with Collins 37P-5. Certified for Category III aircraft.

**NSN:** 5985-01-418-9145

**FEDERAL & MILITARY SPECS:** MIL-E-5400H, MIL-E-5272C, MIL-STD-810B, ARINC Characteristic 519.

## PERFORMANCE



SPECIFICATIONS	
<b>MODELS</b>	<b>S41422-6</b>
<b>ELECTRICAL</b>	
Frequency	329-335 MHz
VSWR	≤2.0:1
Pattern	Cosinusoidal in E & H Planes
Polarization	Linear (horizontal)
Impedance	50 ohms nominal
<b>MECHANICAL</b>	
Weight	.60 lbs. (Max)
Length	6.90 in.
Width	4.60 in.
Thickness	2.00 in.
Material	A356-T6 Alum. Alloy/Epoxy Fiberglass
Finish	Skydrol-Resistant Polyurethane Enamel
Connector	N Female
<b>ENVIRONMENTAL</b>	
Temperature	-61°C (-77°F) to +74° (+165°F)
Vibration	±10 G's
Altitude	-1800 to 80,000 ft.

